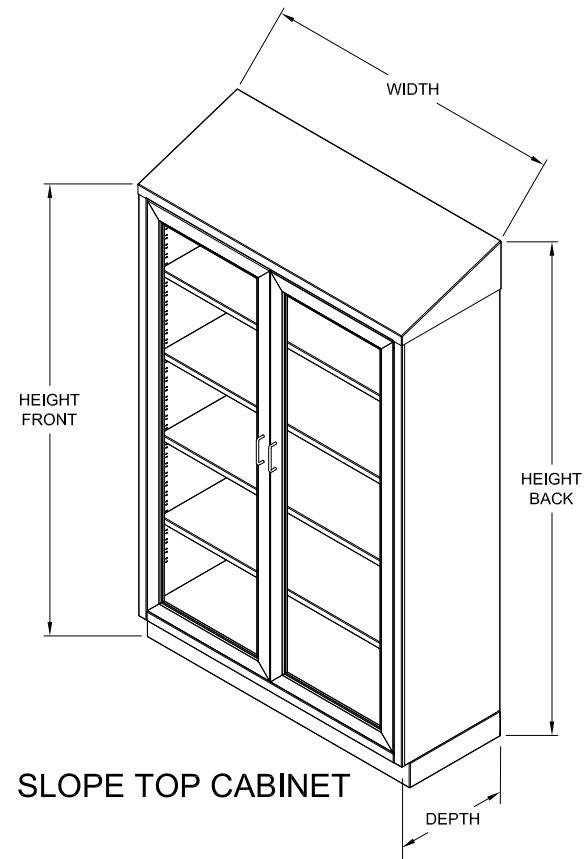


FLAT TOP CABINET

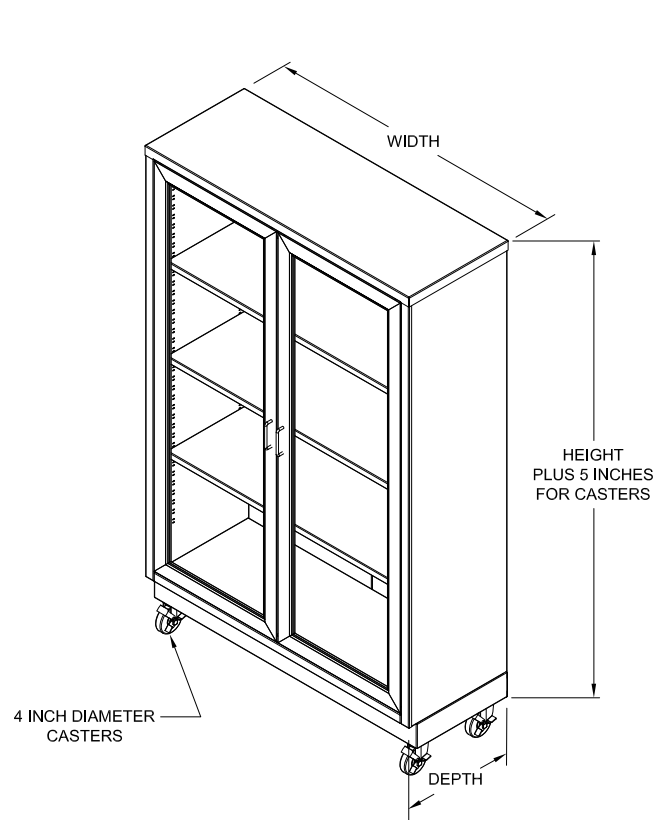


SLOPE TOP CABINET

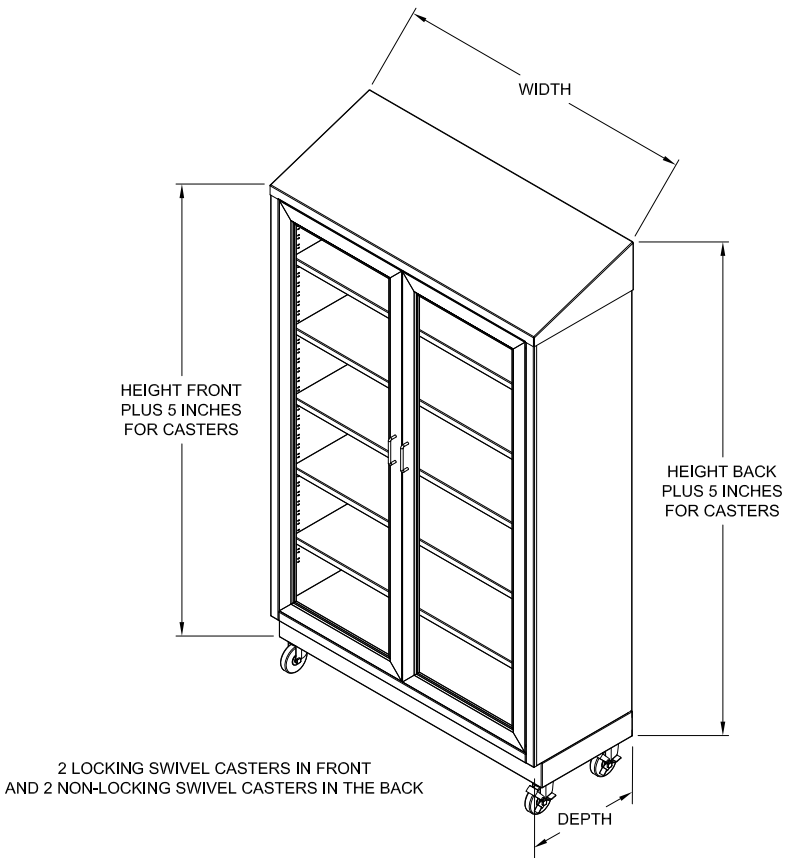
STAINLESS STEEL STORAGE CABINETS
FREE STANDING
FLAT TOP AND SLOPE TOP



820 South Mulberry
Millstadt, IL 62260
877-828-9975



FLAT TOP CABINET



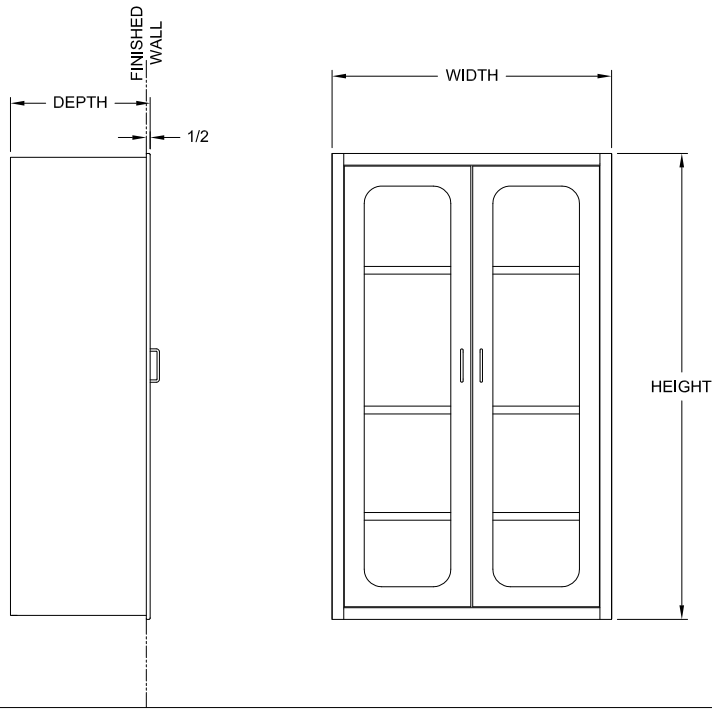
SLOPE TOP CABINET

STAINLESS STEEL STORAGE CABINETS
 FREE STANDING WITH CASTERS
 FLAT TOP AND SLOPE TOP



820 South Mulberry
 Millstadt, IL 62260
 877-828-9975

STORAGE CABINET



STANDARD SIZES

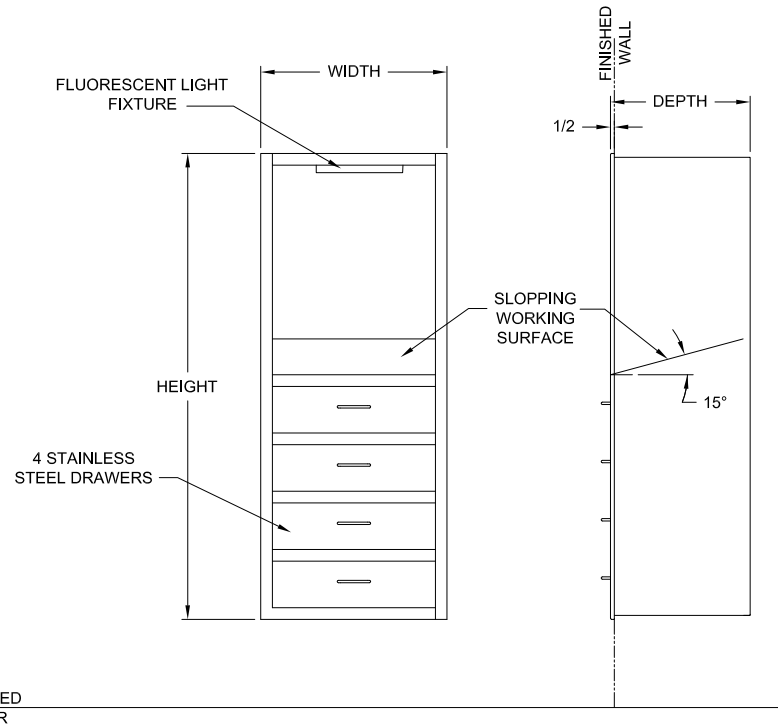
DEPTH 16", 18", 24"

WIDTHS 24", 30", 36", 48", 60"

HEIGHTS 60", 72"

ANY SIZE CAN BE MANUFACTURED PER REQUIRED SPECIFICATION

DESK CABINET



STANDARD SIZES

DEPTH 16", 18", 24"

WIDTHS 24", 30", 36"

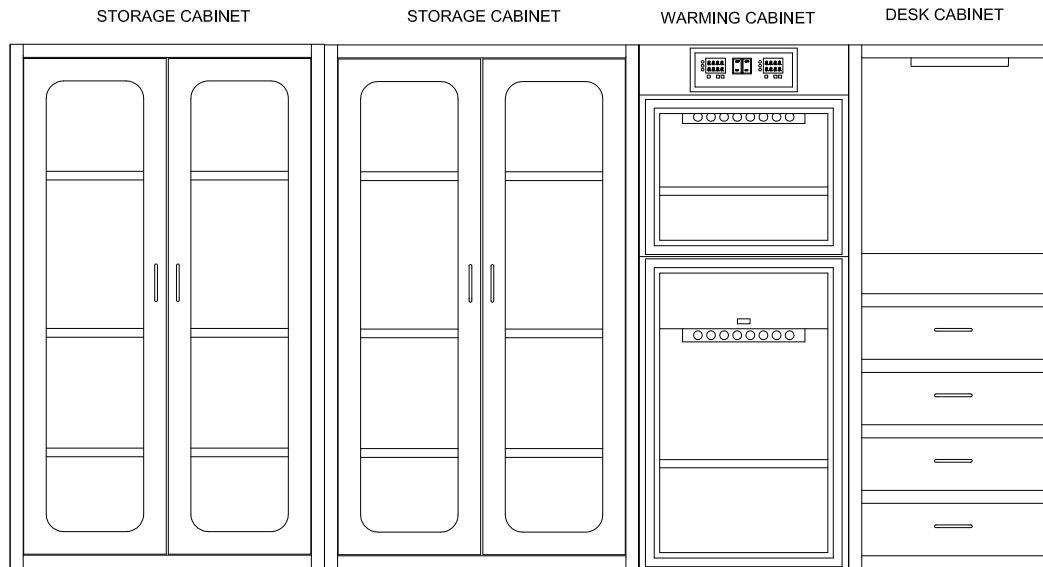
HEIGHTS 60", 72"

ANY SIZE CAN BE MANUFACTURED PER REQUIRED SPECIFICATION

STAINLESS STEEL STORAGE CABINETS WALL RECESSED



820 South Mulberry
Millstadt, IL 62260
877-828-9975

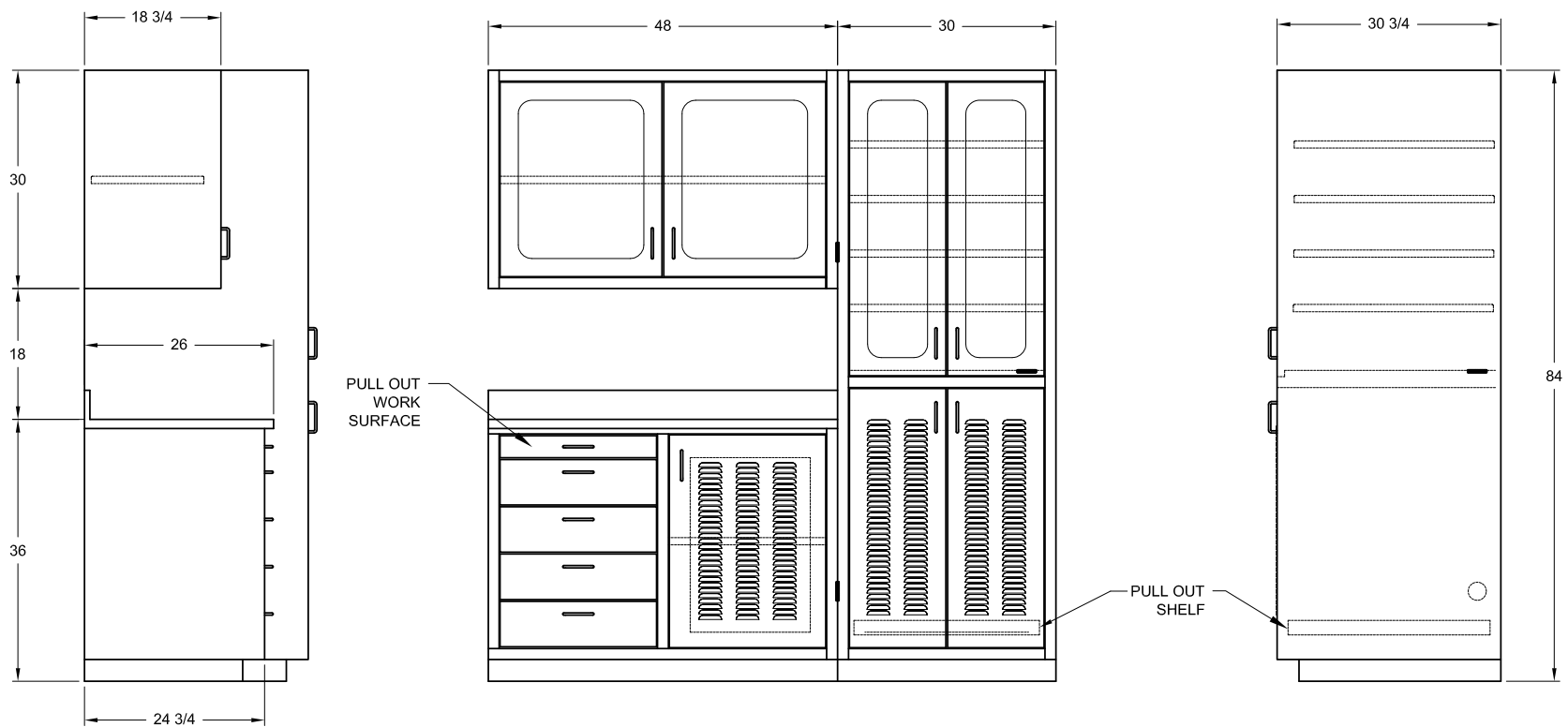


ANY COMBINATION OF STORAGE CABINETS, DESK CABINETS, AND WARMING CABINETS CAN CREATE A CONTINUOUS BANK OF CABINETS.

STAINLESS STEEL STORAGE CABINETS WALL RECESSED



820 South Mulberry
Millstadt, IL 62260
877-828-9975



DOCUMENTATION SHOWN WITH TOWER ON THE RIGHT SIDE.
 DOCUMENTATION STATION CAN BE CONFIGURED WITH THE TOWER ON THE
 LEFT SIDE.

— ○ WIRE PASS THRU

WE CAN CUSTOMIZE ANY COMPONENT OF THIS DOCUMENT STATION
 TO FIT A SPECIFIC SPACE OR USER REQUIREMENT.

NURSES DOCUMENTATION STATION



820 South Mulberry
 Millstadt, IL 62260
 877-828-9975